

NATIONAL POST

NATIONAL POST, SATURDAY, JANUARY 15, 2005

*4 Winchfield Pl.
(Banbury and Lawrence avenues)
Asking price: \$1.679-million
Taxes: n/a*

Interior has large oval skylight, staircase in foyer

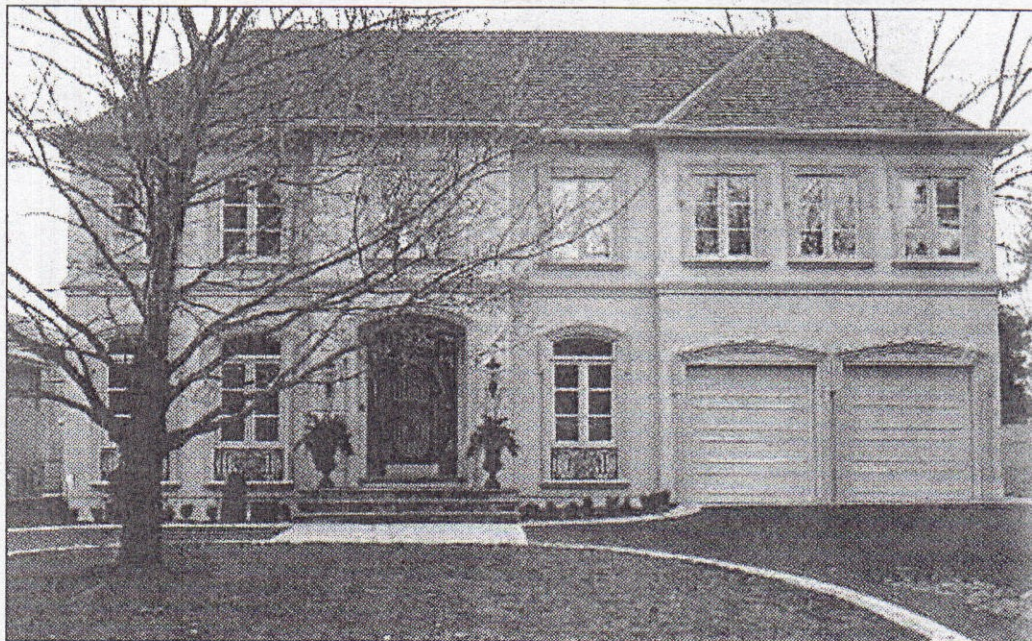
First impressions from the street are grand, but once visitors step past the entrance hall of 4 Winchfield Pl., they will be treated to a dramatic sight — an oval staircase topped with an oval skylight.

“The oval is a shape that worked well in this house because of the width restrictions with a centre-hall plan,” says builder Amedeo Barbini.

“The oval is approximately at the centre of the house. The formal entrance hall opens into the oval shape, with the skylight about 33 feet above the first floor. When you are in the space, it feels enormous.”

The six-bedroom, seven-bathroom classic residence has more than 4,000 square feet of living space. Highlights include a library with a coffered ceiling, a kitchen with granite counters and a large work island, and a living room with a gas fireplace. There is also a gas fireplace in the family room.

The house, set on a 70x106-foot lot in the Post Road and Banbury area, is “a quiet gem, across the ravine from The Bridle Path, with large lots and curving crescents remarkably



This six-bedroom, seven bathroom home near The Bridle Path has many features, including a large, well-appointed kitchen, right.

free of traffic,” Mr. Barbini said.

There is a circular driveway, a built-in, two-car garage and parking for nine cars. It is close to Edwards Gardens and some of the best schools in Toronto, he said.

